

LISTENING TO THE EARTH

Press Release

May 2022

ÉCOUTER
LA TERRE

18.6 —
25.9.22

COLLECTION DU
MUDAC

mudac

10
QUARTIER
DES ARTS
LAUSANNE

Table of contents

Press release	03
The works	
→ Artists featured	04
→ Listening to the Earth's pulse	05
→ Fragments of land	06
→ <i>Upcycling</i> and hybrid creatures	07
→ A message from the cold	08
→ Imbalances	09
→ Incursions into a dreamlike world	10
Environmentally friendly scenography	11
Carefully selected printed materials	11
Programme	12–13
Opening programme	14
Partners	15
Practical information	16

Listening to the Earth

18.06—25.09.2022

Faithful to its values and committed to social issues, mudac echoes a fundamental message and invites us to listen to the Earth with a first exhibition of works from its collection in its new building.

The exhibition presents the museum's acquisitions by plunging the audience into the various disciplines that make up its collection – design, ceramics, glass art, graphic arts and contemporary jewellery. mudac has developed its collection in response to current social issues, bringing together works by designers, craftspeople and artists. The museum's acquisition policy echoes its genuine commitment to contemporary issues and aims to offer, through the choice of works, rich avenues for reflection.

The works featured in this first exhibition of the collection attest to the commitment of the designers and open up the scope of possibilities by offering, in some cases, concrete solutions. They implore us to open our eyes to the phenomena that bear witness to the diversity and vitality of our blue planet, and to become aware of the fragility of this balance.

Listening to the Earth showcases creations that resonate with climate challenges, addressing themes such as telluric forces, melting glaciers, the use of natural resources, *upcycling*, the genetic modification of seeds, forest fires and the decline in insect populations.

Curators

Amélie Bannwart
Isaline Vuille

Scenography

Magali Conus
Boris Dennler

Complementary programme

Laetitia Aeberli
Marie Jolliet

Graphic design

Anaëlle Clot

Overview of the Works

Throughout the scenography, the themes of the *Listening to the Earth* exhibition are categorised under six main headings: Listening to the Earth's pulse, Fragments of land, *Upcycling* and hybrid creatures, A message from the cold, Imbalances and Incursions into a dreamlike world.

Much like the artists' and designers' creations, the exhibition invites each of us to reinvent a more harmonious relationship, one that is more in tune with the Earth.

Artists featured

- Adrien Chevalley (CH)
- Céline Cléron (FR)
- Laura Couto Rosado (CH)
- Bouke de Vries (BE)
- Boris Dennler (CH)
- Anaïs Dunn (FR)
- FormaFantasma (IT)
- Laure Gonthier (CH)
- Fabrice Gygi & Marine Julié (CH, FR)
- David Horvitz (US)
- huber.huber (CH)
- Claudie et Francis Hunzinger (FR)
- Anne Knödler (D)
- Tomas Kral (SL)
- Tomas Libertiny (SK)
- Benoît Maire (FR)
- Yusuké Offhause (FR/JP)
- Yann Oulevay (CH)
- Sandrine Pelletier (CH)
- Adrien Rovero (CH)
- Denis Savary (CH)
- Maude Schneider (CH)
- Bernhard Schobinger (CH)
- Brynjar Sigurdarson (IS)
- Verena Sieber-Fuchs (CH)
- Studio Wieki Somers (NL)
- Nel Verbeke (BE)
- Pedro Wirz (CH/BR)

Overview of the Works

Listening to the Earth's Pulse



Laura Couto Rosado (CH), *Veilleuse tellurique*, 2015
Porcelain, gold gilding, LED, 25 cm high
mudac collection, © Raphaëlle Müller

The Earth continuously emits visible and invisible messages that form the tempo of our environment. Earthquakes, geological faults and tsunamis are all observable telluric transmissions of the forces that drive it. Nevertheless, these tremors are often not perceptible. The perpetual movements of the planet transmit a pulse that emerges on its surface in the form of telluric bands.

As its name suggests, designer **Laura Couto Rosado's** *Veilleuse tellurique* (Earthquake Watch) watches over the Earth and its vibrations and reflects the seismic activity of the Earth's crust – in this case, in Switzerland. The ballet of lights reminds us that the Earth is indeed alive and that it vibrates and changes constantly.

Overview of the Works

Fragments of Land



Laure Gonthier (CH), *La tendresse des pierres II*, Trio, 2015
Porcelain, neon light, 250 x 60 cm, unique
mudac, collection of the Confederation, © Pénélope Henriod

It is through the prism of cartography, with its measurements and boundaries, that humankind has given itself the illusion of mastering the Earth. The history of humankind has been built around the natural and artificial boundaries of its land, seeking to find itself within it and define its contours.

By working with kaolin clay – a widely-exploited raw material that is essential for the manufacture of porcelain – **Laure Gonthier** questions our need for mineral raw materials through her work *La tendresse des pierres II* (The Tenderness of Stones). The works in this part of the exhibition reveal the artistic use of certain natural resources and their materiality and put into perspective the relationship we have with them.

Overview of the Works

Upcycling and Hybrid Creatures



**FormaFantasma (Simone Farresin & Andrea Trimarchi, IT),
Cabinet 1, 2017**

Glass, digital print on aluminium, computer elements, 172 x 50 x 50 cm Edition 6 + 2 AP + 1 Prototype, Publisher Giustini/Stagetti mudac collection, © Ph. Omargolli

Nothing is thrown away, everything is transformed, as evidenced by the computer elements decontextualised by Italian duo **FormaFantasma**. Recovering, enhancing and giving new life to materials destined to be thrown away: artists in this section have competed in ingenuity to transform waste into attractive objects that are no longer to be discarded but preserved. Here, *upcycling* is in the spotlight, combining art with functionality.

Overview of the Works

A Message from the Cold



Anaïs Dunn (FR), *Tension Paysage*, 2021

Blown glass, infrasound system, inox, steel, 350 x 400 x 100 cm
mudac collection, © François Golfier

The works in this section echo ecological concerns related to the sudden acceleration of the melting of the planet's ice in recent decades.

They invite us to listen to the lament of the ice pack as it continues to fragment, as exemplified by **Anaïs Dunn's** *Tension Paysage* (Tension Landscape) which, through the clinking of the glass, manifests the creaking lament of a glacier. These works invite us to become aware – in a metaphorical way – of the submerged part of the iceberg and therefore of the risks incurred by this phenomenon. Revealing this fragile balance, the works also tend to evoke the beauty and fascination of the ice, its delicate nuances and its brilliance – encouraging us to preserve it.

Overview of the Works

Imbalances

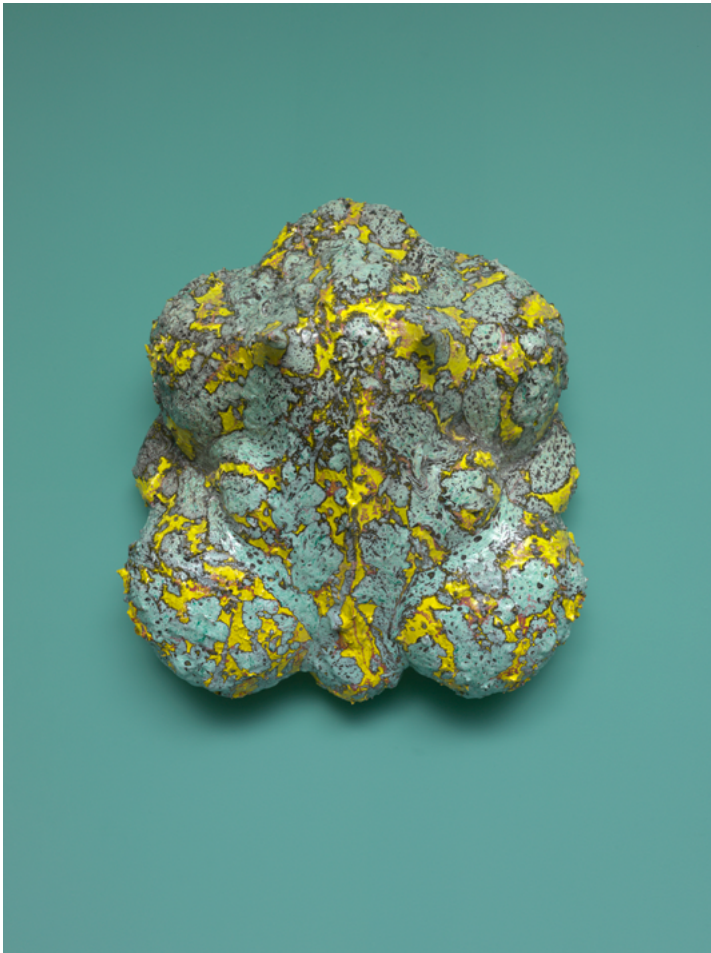


Tomas Libertiny (*1979), *The Seed of Narcissus*, 2011
Blown, silvered and polished crystal, beeswax
mudac, collection of the city of Lausanne, © Atelier de
Numérisation de la Ville de Lausanne

Questioning the link between humans and their environment and the impact of one on the other is fertile ground for the works in this section. Whether it be genetic modification or atmospheric pollution, the artists underline the current state of emergency and urge us to rethink our relationship with the Earth in a more respectful way. For his part, designer **Tomas Libertiny** raises the troubles of the biosphere where we are witnessing a real loss of biodiversity and even the extinction of certain species.

Overview of the Works

Incursions into a Dreamlike World



Denis Savary (CH), *Buffa III*, 2018
Glazed ceramic, 65 x 57 x 25 cm
mudac, collection of the Confederation,
© Annick Wetter

Listening to the Earth means taking the time to observe, understand and appreciate it. It means being aware of the riches that make up the Earth in order to take better care of it; understanding that everything is a question of interdependence, and that the preservation of the non-human underpins the preservation of humanity. Finally, listening to the Earth also means nourishing one's imagination and drawing on tales, myths and legends, in order to continue to live and dream.

The muted universe of this section evokes the bowels of the Earth, its caves and cavities and seeks to underline the passage of a symbolic threshold – real and imaginary – between two worlds. Suggestive and poetic, functional and fictional, the works foster multiple narratives as well as incursions into a dreamlike world. The works here weave a bridge between the Earth and imagination, much like **Denis Savary's** disproportionate toad embodying the figure of change and transformation.

Environmentally friendly scenography

Developing an exhibition whose theme touches on the environment and our relationship with the Earth has given the mudac team an extra boost in its reflections on the conceptualisation of scenography that respects sustainable development.

The choice of polystyrene for most of the scenography in this exhibition may therefore seem provocative and at odds with concepts of eco-responsibility. However, following in-depth studies, this material turns out to be more ecological than many others. Indeed, the polystyrene selected is 100% recycled in French-speaking Switzerland – transported less than 40 kilometres – and it will return to its cycle where it will be 100% recycled again. In addition, the anthracite colour obtained by adding graphite to the polystyrene does not require any additional treatment or painting, thus placing this material in a much better position than a composite wood-glue-render-paint solution. The use of a single material for the whole also reduces the ecological impact. Ultimately, the adjustable format of polystyrene makes it possible to design real museum elements such as plinths, barriers, routes or even signage supports. For the floor, the MDF (*Medium Density Fibre*) panels are from Swiss forests and will be 100% reused internally. For the carpet, the goat wool tiles are hired – they will be returned after the exhibition – and have already been used at another major event in Switzerland.

Carefully selected printed media

In collaboration with the museum team, Anaëlle Clot, the graphic designer and artist commissioned to create the visual identity of *Listening to the Earth*, offered an ecological reflection on printed materials. The papers selected for the various communication supports of the exhibition are recycled, made entirely of waste paper and are FSC and Blue Angel certified. The designer has also created a large mural that covers the walls of *Listening to the Earth* and adds a vibrant dimension, like sound or seismic waves, to the scenography. This triptych is printed on a PVC-free adhesive fabric and, at the end of the exhibition, parts of it will be offered to various organisations to decorate the walls of their premises. This approach, which is part of the *upcycling* trend, will help give the fresco a second life so it may continue to reverberate outside these walls.

Programme 1/2

inscription.mudac@plateforme10.ch
The mudac workshops are accessible to people with disabilities.

THE WORK OF THE PUBLIC

During the exhibition, the public is invited to take part in the RTS Culture x mudac competition. Participation on site or online at **avecvous.rts.ch** or **mudac.ch**.

To be won: Plateforme 10 entrance tickets, guided tours, vouchers for the mudac-Photo Elysée bookshop and a meeting with the winning artist on 8 September at mudac at Plateforme 10.

A GREEN ROUTE FROM MUDAC TO THE CANTONAL MUSEUM AND BOTANICAL GARDENS

Saturday 27 August 2pm-4pm

The summer break is an opportunity to take a walk between two exhibitions dealing with similar themes through very different media, i.e., how to get closer to nature and ecological issues.

Visit for all ages

Entrance fee at the museum

Upon registration

BOGOLAN MINERAL DYEING WORKSHOP, FROM CLAY TO TEXTILE DESIGN

Passeport vacances for 9 – 15-year-olds: Wednesday 6 July, Thursday 7 July and Friday 8 July 9am-12:30pm

Adults and general public: Saturday 9 July 9am to 1pm

Taking inspiration from the works featured in the exhibition, experiment with graphic designer and artist Emilie Fayet with an ancient dyeing technique and observe the reaction of the materials to discover the shapes and colours created thanks to the clay.

Workshops for 9 to 15-year-olds (via Passeport vacances), open to all on Saturday

CHF 50/person on Saturday

Upon registration

FAMILY VISITS

Wednesday 22 June and 7 September 2:30pm to 3:30pm

This tour is specially adapted for children aged 6 and over and offers a fun way to learn about the earth.

Visit for 6- to 12-year-olds

Entrance fee to the museum, free for children

Upon registration

GUIDED TOUR WITH EXHIBITION CURATORS AMÉLIE BANNWART & ISALINE VUILLE FOLLOWED BY BRUNCH

Sunday 4 September 10am to 12pm

Come and discover the exhibition through the eyes of its curators, who will lead visitors on a stroll enhanced with reflections and multiple narratives on ecological themes. The visit will be followed by brunch.

Visit for all ages

Entrance fee to the museum

Upon registration

SPEED-MEETING WITH THE ARTISTS OF THE EXHIBITION

Thursday 8 September 6pm-8pm

For one evening, artists Bertille Laguet, Boris Dennler, Laura Couto Rosado, Adrien Rovero and Maude Schneider will be present in mudac's halls to introduce you to their works and their artistic approach. This speed-meeting will be followed by an aperitif to carry on the discussion.

Visit for all ages

Entrance fee to the museum

Upon registration

DISCOVER JULIE SEMOROZ' INSTALLATION DURING THE NIGHT OF MUSEUMS 2022

Saturday 24 September 2pm-2am

Artist Julie Semoroz takes over the mudac's halls during the Night of Museums to invite you to listen to the living through vibrations. Let yourself be carried away by this immersive experience of cohabitation with nature.

Open to all

Entrance fee to the museum or upon presentation of the Museum Night ticket No registration required

PUBLIC GUIDED TOURS

Sunday 10 and 24 July, 7 and 21 August 2:30pm to 3:30pm

Visits for the general public

Entrance fee to the museum, free for the Friends of mudac

No registration

VISIT GUIDE

For all those who wish to visit the exhibition, a visitor's guide, specially designed by graphic artist Anaëlle Clot, will be made available to the public free of charge.

CHILDREN'S TRAIL

A brochure offering a special tour for children aged 8 to 12 will be available to discover the *Listening to the Earth* exhibition.

* This programme is subject to change. To stay informed in real time about activities related to the exhibition, please consult our website **mudac.ch**

Opening Programme

→ **MUDAC**

TRAINS, TRENO, ZUG, TREN. Rencontrons-nous à la gare

18.06 - 25.09.22

Press kit and HD visuals to download on mudac.ch/press

→ **PHOTO ELYSÉE**

TRAIN ZUG TRENO TREN. Crossing lines

18.06 - 25.09.22

60 species of photographic spaces

18.06 - 12.12.22

→ **MCBA**

TRAIN ZUG TRENO TREN. Voyages imaginaires

18.06 - 25-09.22

Gustave Buchet. Accusé de peindre

18.06 - 25.09.22

Marie Cool, Fabio Balducci. Dai campi all'elica

10.06 - 04.09.22

Jean Dubuffet. Donation de Mireille et James Lévy

24.06 - 18.09.22

Programme of events for the opening period to follow on mudac.ch

Partners

Main partner mudac

Julius Bär

Media partner of the exhibition



Practical information

Exhibition dates

→ From Saturday 18 June to Sunday 25 September 2022

Opening times

- Monday, Wednesday: 10am-6pm
- Thursday: 10am-8pm
- Friday – Sunday: 10am-6pm
- Closed on Tuesday

To download the HD visuals

- www.mudac.ch/presse
- password : presse2022

Media contact

- Sylvie Rottmeier, Communications Officer
- +41 21 318 43 59
- presse.mudac@plateforme10.ch

Please contact us for any further information.

mudac

musée cantonal de design et
d'arts appliqués contemporains
Place de la Gare 17
CH - 1003 Lausanne
+41 21 318 44 00
mudac@plateforme10.ch

#mudaclausanne
mudac.ch
plateforme10.ch
f @mudac.design.museum
@ @mudaclausanne

mudac

